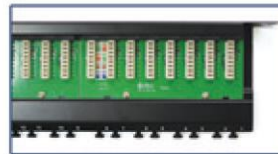




## CAT6 / CAT5E UTP PATCH PANEL



### FEATURE

- 24 PORTS IN 1U HEIGHT RACK SPACE.
- EIGHT-PORT RJ45 MODULES APPLIED.
- FRIENDLY INSTALLATION. RIGHT-ANGLE BETWEEN IDCs & RJ45 JACKS.
- IDC COMPATIBLE WITH KRONE TOOL ONLY.
- TERMINATING 4 PAIRS, 22-26 AWG, UNSHIELDED CABLE.
- UNIVERSAL LABELS COLOR-CODED FOR T568A AND T568B WIRING SCHEMES.
- PROVIDING CABLE MANAGEMENT BAR FUNCTION TO PREVENT FROM CABLE OVER BENDING.

### ELECTRICAL CHARACTERISTICS

- DIELECTRIC STRENGTH: 1,000V RMS AT 60Hz FOR 1 MINUTE.
- INSULATION RESISTANCE: 500mΩ MINIMUM.
- CONTACT RESISTANCE: 2mΩ PER CONTACT.
- TEMPERATURE RANGE: -10°C TO +60°C.
- TRANSMISSION PERFORMANCE: TIA/EIA 568C.2 & ISO/IEC 11801.

### MECHANICAL CHARACTERISTICS

#### MODULAR CONNECTOR

- RJ45 8-PIN CONNECTOR: FCC PART 68, SUBPART F AND IEC-60603-7 COMPLIANT.
- DURABILITY: 750 MATING CYCLES.
- MATERIAL: PHOSPHOR BRONZE WITH 50 MICRON INCHES OF GOLD OVER 100 MICRON-INCHES NICKEL PLATING.

#### IDC CONNECTOR

- IDC CONNECTOR: INSULATION SLICING OF 22 TO 26AWG.
- CONNECTOR: PHOSPHOR BRONZE WITH TIN PLATING.
- IDC BODY: UL 94V-2, PLASTIC.